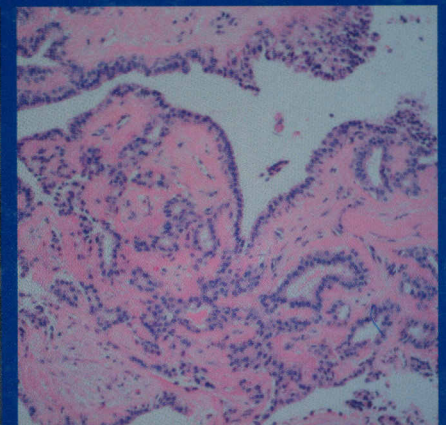
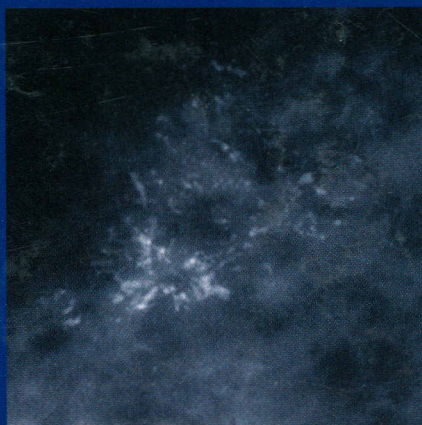
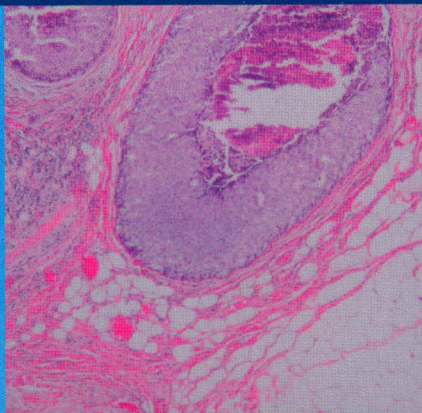


151324

Ira Bleiweiss
Shabnam Jaffer
Susan R. Drossman

Breast Core Biopsy

A Pathologic-Radiologic Approach



SAUNDERS
ELSEVIER

Contents

Foreword	vii
Preface	ix
Acknowledgements	xi
Dedication	xiii
1 Introduction and general considerations	1
2 Well-circumscribed solid lesions	11
3 Well-circumscribed solid lesions with heterogeneous radiodensity	29
4 Largely cystic lesions	37
5 Partially solid, partially cystic lesions	47
6 Well-circumscribed solid malignancies	63
7 Irregular densities	73
8 Spiculated architectural distortion	83
9 Architectural distortion	93
10 Introduction to stereotactic core biopsies for calcifications	101
11 Calcium oxalate crystals	107
12 Linear high-density calcifications	115
13 Clustered low-density granular calcifications	127
14 Linear and branching calcifications	137
15 Miscellaneous unusual and rare lesions	151
16 Complications and follow-up – after the core biopsy	177
17 Postscript	185
Index	187