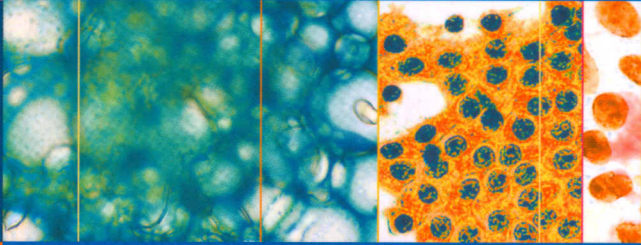


151326

Syed Z. Ali  
Anil V. Parwani



# Breast Cytopathology

Essentials in Cytopathology  
*Series Editor*  
Dorothy L. Rosenthal



Springer

# Contents

Foreword by <i>Dorothy L. Rosenthal</i> .....	vii
Series Preface .....	ix
Preface .....	xi
Special Acknowledgment .....	xiii
1. Introduction and Technical Aspects.....	1
2. Non-neoplastic and Proliferative Lesions .....	16
3. Benign and Borderline Tumors .....	57
4. Primary Malignant Tumors .....	85
5. Metastatic and Secondary Tumors.....	138
6. Breast Ductal Lavage.....	153
Index.....	165