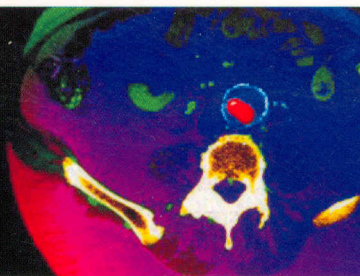


151408



# CT

## Differential Diagnosis

SATISH K. BHARGAVA

# Contents

---

<b>1. BRAIN</b> .....	<b>1</b>
• <i>Intracranial Calcification</i> .....	<b>1</b>
<i>Rajul Rastogi, Shuchi Bhatt, Sumeet Bhargava</i>	
• <i>Differential Diagnosis of Brain Tumors</i> .....	<b>11</b>
<i>Nikhil Aggarwal, Rajul Rastogi, Shuchi Bhatt, Satish K Bhargava</i>	
• <i>Nontumoral Brain Lesions</i> .....	<b>21</b>
<i>Rajul Rastogi, Shuchi Bhatt</i>	
• <i>Ventricular Lesions</i> .....	<b>33</b>
<i>Rajul Rastogi, Shuchi Bhatt, Satish K Bhargava</i>	
• <i>Differentiating Features of Brain Lesions</i> .....	<b>40</b>
<i>Rajul Rastogi, Shuchi Bhatt</i>	
• <i>Miscellaneous Lesions of the Brain</i> .....	<b>75</b>
<i>Rajul Rastogi, Shuchi Bhatt, Satish K Bhargava</i>	
<b>2. SPINAL CORD</b> .....	<b>89</b>
• <i>Spinal Cord Lesions</i> .....	<b>89</b>
<i>Anubhav Sarikwal, Satish K Bhargava, Shuchi Bhatt</i>	
• <i>Lesions Associated with Spinal Canal Stenosis</i> .....	<b>118</b>
<i>Satish K Bhargava, Anubhav Sarikwal, Rajul Rastogi</i>	
<b>3. EAR AND TEMPORAL BONE</b> .....	<b>124</b>
<i>Satish K Bhargava, Puneet Kocher, Rajul Rastogi</i>	
<b>4. ORBITAL LESIONS</b> .....	<b>156</b>
<i>Satish K Bhargava, Anubhav Sarikwal, Rajul Rastogi</i>	
<b>5. NASAL OR PARANASAL SINUS LESIONS</b> .....	<b>177</b>
<i>Anubhav Sarikwal, Shuchi Bhatt, Satish K Bhargava</i>	
<b>6. NECK</b> .....	<b>203</b>
• <i>Pharyngeal/parapharyngeal Lesions</i> .....	<b>203</b>
<i>Rajul Rastogi, Satish K Bhargava</i>	

– <i>Hepatic Lesions</i> .....	326
– <i>Gallbladder and Biliary Tract Lesions</i> .....	348
• <i>Splenic and Pancreatic Lesions</i> .....	355
<i>Satish K Bhargava, Rajul Rastogi</i>	
– <i>Splenic Lesions</i> .....	355
– <i>Pancreatic Lesions</i> .....	360
• <i>Gastrointestinal Lesions</i> .....	366
<i>Rajul Rastogi, Satish K Bhargava</i>	
– <i>Gastric Lesions</i> .....	366
– <i>Small Bowel Lesions</i> .....	373
– <i>Colonic Lesions</i> .....	379
• <i>Peritoneal/Mesenteric/Omental Lesions</i> .....	386
<i>Rajul Rastogi, Sumeet Bhargava, Satish K Bhargava</i>	
• <i>Retroperitoneal Lesions</i> .....	393
<i>Rajul Rastogi, Satish K Bhargava</i>	
• <i>Adrenal Lesions</i> .....	401
<i>Rajul Rastogi, Shuchi Bhatt, Satish K Bhargava</i>	
• <i>Genitourinary Lesions</i> .....	406
– <i>Renal Lesions</i> .....	406
<i>Rajul Rastogi, Sumeet Bhargava</i>	
– <i>Perinephric Lesions</i> .....	420
<i>Rajul Rastogi, Satish K Bhargava</i>	
– <i>Bladder and Pelvic Lesions</i> .....	422
<i>Rahul Gera, Shuchi Bhatt, Satish K Bhargava</i>	
– <i>Male Reproductive Systems</i> .....	431
<i>Rahul Gera, Shuchi Bhatt, Satish K Bhargava</i>	
– <i>Female Reproductive System Lesions</i> .....	436
<i>Shuchi Bhatt, Rahul Gera</i>	
<b>9. MUSCULOSKELETAL SYSTEM</b> .....	<b>447</b>
• <i>Bony Lesions</i> .....	447
<i>Anupama Tandon, Mamta Motla, Rajul Rastogi</i>	
• <i>Rib Lesions</i> .....	485
<i>Parul Garg, Shuchi Bhatt, Satish K Bhargava</i>	

– <i>Hepatic Lesions</i> .....	326
– <i>Gallbladder and Biliary Tract Lesions</i> .....	348
• <i>Splenic and Pancreatic Lesions</i> .....	355
<i>Satish K Bhargava, Rajul Rastogi</i>	
– <i>Splenic Lesions</i> .....	355
– <i>Pancreatic Lesions</i> .....	360
• <i>Gastrointestinal Lesions</i> .....	366
<i>Rajul Rastogi, Satish K Bhargava</i>	
– <i>Gastric Lesions</i> .....	366
– <i>Small Bowel Lesions</i> .....	373
– <i>Colonic Lesions</i> .....	379
• <i>Peritoneal/Mesenteric/Omental Lesions</i> .....	386
<i>Rajul Rastogi, Sumeet Bhargava, Satish K Bhargava</i>	
• <i>Retroperitoneal Lesions</i> .....	393
<i>Rajul Rastogi, Satish K Bhargava</i>	
• <i>Adrenal Lesions</i> .....	401
<i>Rajul Rastogi, Shuchi Bhatt, Satish K Bhargava</i>	
• <i>Genitourinary Lesions</i> .....	406
– <i>Renal Lesions</i> .....	406
<i>Rajul Rastogi, Sumeet Bhargava</i>	
– <i>Perinephric Lesions</i> .....	420
<i>Rajul Rastogi, Satish K Bhargava</i>	
– <i>Bladder and Pelvic Lesions</i> .....	422
<i>Rahul Gera, Shuchi Bhatt, Satish K Bhargava</i>	
– <i>Male Reproductive Systems</i> .....	431
<i>Rahul Gera, Shuchi Bhatt, Satish K Bhargava</i>	
– <i>Female Reproductive System Lesions</i> .....	436
<i>Shuchi Bhatt, Rahul Gera</i>	
9. <b>MUSCULOSKELETAL SYSTEM</b> .....	447
• <i>Bony Lesions</i> .....	447
<i>Anupama Tandon, Mamta Motla, Rajul Rastogi</i>	
• <i>Rib Lesions</i> .....	485
<i>Parul Garg, Shuchi Bhatt, Satish K Bhargava</i>	

**xvi** *CT Differential Diagnosis*

---

• <i>Skull and Jaw Lesions</i> .....	487
<i>Mamta Motla, Anupama Tandon, Shuchi Bhatt, Rajul Rastogi</i>	
• <i>Bony Spinal Lesions</i> .....	502
<i>Mamta Motla, Anupama Tandon</i>	
• <i>Arthritis</i> .....	509
<i>Rajul Rastogi, Shuchi Bhatt, Satish K Bhargava</i>	
• <i>Soft Tissue Lesions</i> .....	522
<i>Anupama Tandon, Mamta Motla, Shuchi Bhatt, Rajul Rastogi</i>	
<i>Index</i> .....	529