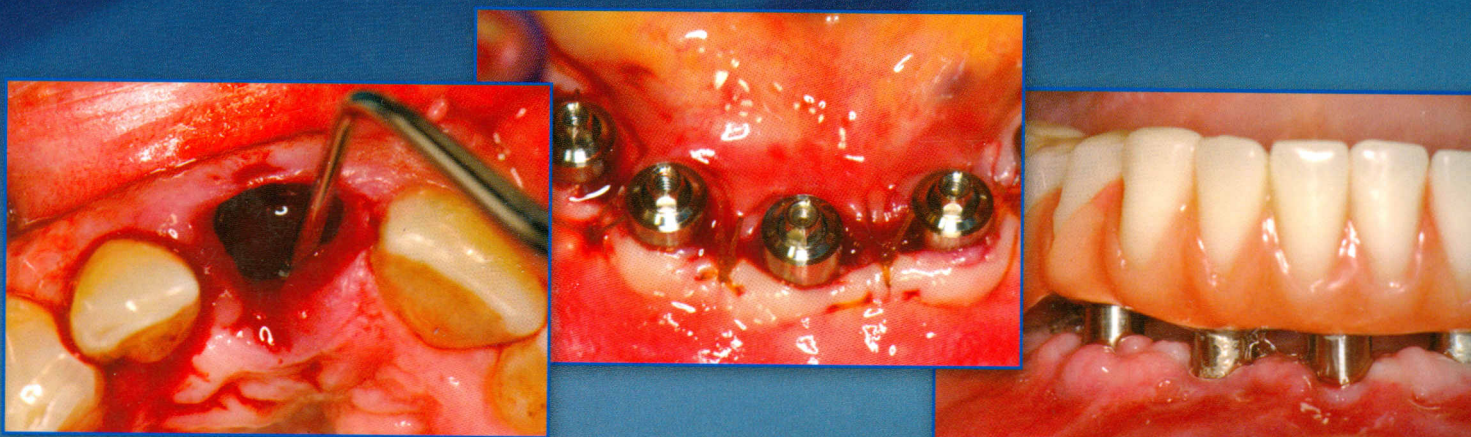


151439

COLOR ATLAS OF DENTAL IMPLANT SURGERY

SECOND EDITION



MICHAEL S. BLOCK

SAUNDERS
ELSEVIER

Contents

Part I: Mandible, 1

1 Surgery of the Anterior Mandible, 3

Placement of two to five implants in the anterior mandible, 3

General considerations, 3

Evaluation of anatomy—physical examination of the patient without teeth, 4

Evaluation of anatomy—radiologic examination of the patient without teeth, 5

Surgical treatment, 7

Augmentation of the atrophic mandible, 23

General considerations, 23

Intraoral incision and placement of autogenous corticocancellous bone grafts, 25

Extraoral incision and placement of autogenous corticocancellous bone grafts, 28

Implant placement into augmented mandibles, 30

Placement of implants into atrophic mandibles without grafting, 30

Alveolar ridge distraction of the anterior mandible, 30

Exposure and need for secondary soft tissue surgery, 34

Immediate loading of the edentulous mandible, 34

Immediate loading with provisional restorations, 36

Fixed, hollow-shell crown and bridge adapted to implants, 36

Provisional hybrid prostheses, 41

Immediate loading with final restoration, 45

Use of prefabricated segmented bar and precision attachments, 45

Computed tomography-generated final mandibular prosthesis, 50

Discussion, 56

2 Surgery of the Posterior Mandible, 58

Placement of implants in the posterior mandible, 58

General considerations, 58

Treatment planning and diagnosis, 60

Physical examination, 60

Stent fabrication, 62

Determination of the number and size of implants, 62

Surgical treatment, 64

Placement of implants into adequate bone, 64

Placement of implant into thin bone, 68

Augmentation of thin or vertically deficient posterior mandibular ridges, 69

Augmentation of thin ridge using particulate materials, 78

Part II: Maxilla, 91

3 Surgery of the Edentulous Maxilla, 93

Surgery for the anterior maxilla, 93

Preoperative planning and assessment, 93

Placement of four implants into the anterior maxilla, 95

Placement of eight implants without a graft, 98

Placement of implants and onlay bone grafts for isolated defects, 107

Placement of eight implants with sinus grafts, 110

Exposure of implants in the edentulous maxilla, 110

Surgery for the posterior maxilla, 111

Single-premolar or single-molar restorations, 111

Multiple-teeth implant-borne restorations, 114

Particulate bone grafting with membrane coverage, 114

Solid onlay grafts harvested from the symphysis or ramus, 115

Reconstruction of severe anterior maxillary defects using distraction osteogenesis, bone grafts, and implants, 116

General surgical principles, 118

Case report, 119

Preoperative workup, 119

Placement of distraction device, 119

Removal of distractor and harvesting of bone graft, 120

Placement of implant, 122

4 Maxillary Sinus Grafting, 127

Background, general principles, and techniques, 127

Presurgical screening, 128

Preoperative radiographic screening, 128

Surgical technique, 129

Bone-harvesting techniques, 131

Jawbone grafts, 131

Tibia bone grafts, 133

- Periosteal osteocortical flap, 137
- Cortical window, 137
- Postoperative management, 137
- Iliac crest grafts, 137

Placement of bone graft into the sinus, 138

- Bone morphogenetic protein for sinus augmentation, 143
- Recombinant BMP administration, 143
- Literature review, 143
- Technique, 145

5 Zygomaticus Implants and Angled Implants for the Edentulous Maxilla, 152

Placement of zygomaticus implants combined with anterior implants, 152

- General considerations, 152
- Preoperative workup, 153
- Surgical procedure, 153

Placement of four implants, angled, for support of full-arch prosthesis, 158

- Assessment and treatment plan, 161
- Case study, 161

6 Techniques for Grafting the Extraction Site, 165

Grafting material, 166

- Bovine mineralized bone, 166
- Mineralized bone allograft, 166
- Autogenous bone, 166

Anterior maxillary teeth, 167

- Gingival margin position, 167
- Level of bone on adjacent tooth, 167
- Presence or absence of root prominence, 170
- Proportions of tooth to replace in regard to adjacent teeth, 170
- Local deficiency of bone in the implant site, 173
 - Labial defects, 173
 - Palatal defect or concavity, 173
 - Apical holes, 178
- Surgical technique, 179
 - Tooth extraction protocol, 179
 - Graft placement, 180
 - Grafting in presence of large bone defects, 180

Molar sites, 180

- Incision design, 187
- Tooth extraction and graft procedure, 187
 - Postoperative instructions, 189

Immediate placement of implants at tooth extraction, 189

- Indications and contraindications, 189
- One-stage implants placed in fresh extraction sites, 189
- Preoperative evaluation and implant placement in esthetic zone, 189
 - Smile line, 189
 - Esthetic evaluation, 191
 - Periodontal biotype, 191
 - Probing, 192
 - Occlusal analysis, 192
 - Radiographic evaluation, 192
- Anatomic considerations after tooth extraction, 193
- Indications and implant stability, 198
- Surgical techniques for specific teeth, 199
 - General considerations, 199
 - Central incisors, 200
 - Lateral incisors, 203
 - Canines, 204
 - Premolars, 205
 - Mandibular incisors, 208

7 Immediate Provisionalization of Implant Restorations, 210

With contributions by Yoav Grossman and Mariana Pasciuta

Methods for immediate provisionalization of single-tooth implant restorations, 210

- General considerations, 211
- Preoperative laboratory preparation of abutment and provisional crown, 211
 - Laboratory technique, 211
 - Surgical procedure, 217
- Chairside abutment preparation and fabrication of provisional crown, 218
 - Preoperative considerations, 220
 - Provisionalization method, 220
- Indexing abutment for laboratory fabrication of provisional crown with placement in patient's mouth within hours or days, 220
 - Preoperative considerations, 220
 - Surgical and impression technique, 225
- Postoperative management, 226
- Potential complications, 226
- Discussion, 227

Methods for immediate provisionalization of multiunit implant restorations, 227

- Literature review: case reports, 228
- General principles, 229
- Posterior maxillary case, 230
- Anterior maxillary case with cement retention, 233

- Anterior maxillary case with computer-generated surgical stent and screw retention of provisional prosthesis, 237
- Posterior maxillary case with transfer made after implant placement, 241
- Posterior units with immediate temporary prosthesis with splinted implants, 245
- Partial mandibular restoration using removable partial denture as provisional hybrid-style prosthesis, 248
- Posterior mandibular immediate provisional crowns with CAD CAM abutments, 251

8 Esthetic Anterior Implant Restorations: Surgical Techniques for Optimal Results, 257

Critical factors for esthetic central incisor implant restorations, 258

- Bone and soft tissue, 258
- Placement of implants into extraction sockets immediately after tooth extraction, 264
- Smile line, 264
- Color of adjacent teeth, 264
- Symmetry of anterior dentition, 265
- Position of implant, 265
- Prognostic factors, 265
 - Gingival margin of tooth before extraction or after healing, 266
 - Loss of labial bone, 267
 - Implant positioning, 271

Diagnosis, treatment planning, and surgical techniques, 272

- Incision design, 273
- Implant location, 273
- Decisions affecting treatment, 274
 - Sufficient bone width, sufficient bone height, 276
 - Thin bone width, sufficient bone height, 277

Immediate loading and one-stage protocol, 310

One-stage technique for implant placement after tooth extraction, 316

General considerations and follow-up treatment, 316

Conclusions, 317

9 Soft Tissue Manipulation around Implants in the Esthetic Zone, 319

Soft tissue manipulation for ridge augmentation, 321

- Subepithelial connective tissue grafting for ridge augmentation, 323
- Timing the placement of soft tissue grafts, 323
- Palatal roll technique, 324
- Transposition of palatal tissue for exposure of implants, 328
- Placement of subepithelial connective graft as a separate procedure, 329
- Recipient site preparation: subepithelial connective tissue graft without simultaneous removal of a membrane, 329
- Subepithelial connective tissue graft harvest, 331
 - Open technique, 331
 - Closed technique, 332
 - Handling and modifying connective tissue graft, 340
- Placement of subepithelial connective tissue graft, 340
- Subepithelial connective graft with simultaneous removal of nonresorbable membrane, 340

Coronal correction of gingival margin on implants, 357

- Subepithelial connective tissue grafting for coronal movement of gingival margin and elimination of vertical scars, 358
- Semilunar flap for coronal repositioning of gingival margin, 359

Index, 365