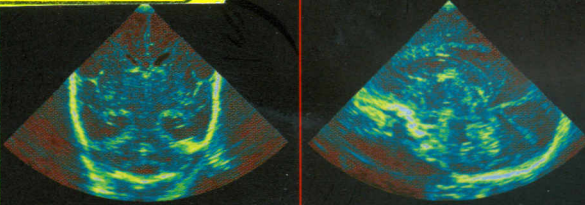


Gerda van Wezel-Meijler

151861



Neonatal Cranial Ultrasonography

 Springer

Introduction	XIII
Part I The Cranial Ultrasound Procedure	1
1 Cranial Ultrasonography: Advantages and Aims	3
1.1 Advantages of Cranial Ultrasonography	3
1.2 Aims of Neonatal Cranial Ultrasonography	4
2 Cranial Ultrasonography: Technical Aspects	9
2.1 Equipment	9
2.1.1 Ultrasound Machine	9
2.1.2 Transducers	9
2.2 Data Management	13
2.3 Sonographer and Safety Precautions	13
3 Performing Cranial Ultrasound Examinations	17
3.1 Standard Views	18
3.1.1 Coronal Planes	18
3.1.2 Sagittal Planes	18
3.2 Supplemental Acoustic Windows	23
3.2.1 Posterior Fontanel	24
3.2.2 Temporal Windows	28
3.2.3 Mastoid Fontanels	30
3.3 Doppler Flow Measurements	33

Appendix 3.1	Indications for Scanning Through Supplemental Windows	33
4	Assessing Cranial Ultrasound Examinations	37
4.1	Assessing Cranial Ultrasound Examinations	37
4.1.1	A Systematic Approach to Detect Cerebral Pathology	37
Appendix 4.1	Measurement of the Lateral Ventricles	49
5	Timing of Ultrasound Examinations	53
5.1	Timing of Ultrasound Examinations	53
5.1.1	Ultrasound Screening Programme	53
5.2	Cranial Ultrasonography at Term Corrected Age ...	57
5.3	Adaptations of Ultrasound Examinations, Depending on Diagnosis	59
Appendix 5.1	Indications for Ultrasonography at Term Corrected Age	65
6	Classification of Peri- and Intraventricular Haemorrhage, Periventricular Leukomalacia, and White Matter Echogenicity	69
6.1	Scoring Systems	69
Appendix 6.1	Classification of Peri- and Intraventricular Haemorrhage	69
Appendix 6.2	Classification of Periventricular Leukomalacia	78
Appendix 6.3	Classification of Periventricular White Matter Echogenicity	79
7	Limitations of Cranial Ultrasonography and Recommendations for MRI	85
7.1	Limitations of Cranial Ultrasonography	85
7.2	Role of MRI	86
7.2.1	Conditions in Which MRI Contributes to Diagnosis and/or Prognosis	86

7.3	Role of CT	87
Appendix 7.1	Indications for Neonatal MRI Examinations	87
8	Maturational Changes of the Neonatal Brain	91
8.1	Maturational Processes	91
8.2	Gyration	92
8.3	Myelination	96
8.4	Cell Migration	98
8.5	Germinal Matrix Involution	99
8.6	Deep Grey Matter Changes	101
8.7	Changes in Cerebrospinal Fluid Spaces	101
9	Summary	107
10	Further Reading	109
Part II	Ultrasound Anatomy of the Neonatal Brain	111
1	Coronal Planes	113
2	Sagittal Planes	129
3	Posterior Fontanel	139
4	Temporal Window	147
5	Mastoid Fontanel	153
	Legends of Corresponding Numbers in Ultrasound Scans	161
	Subject Index	163