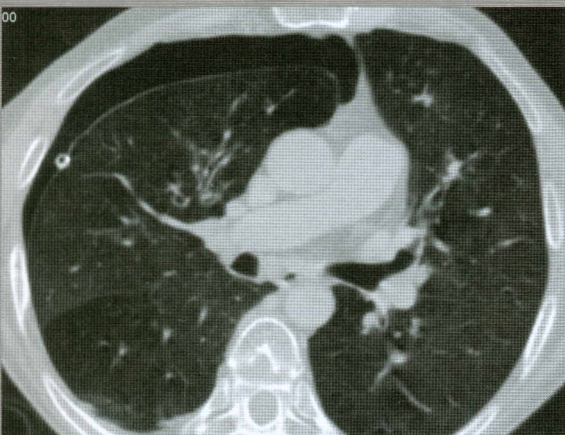
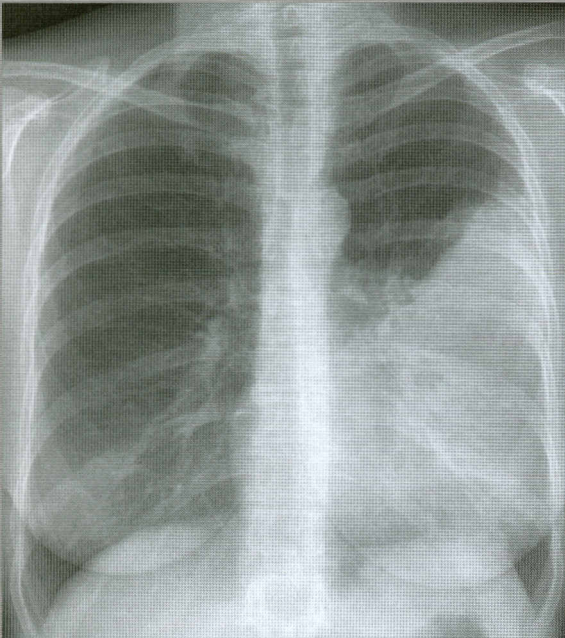


152050

Radiology of Chest Diseases

Sebastian Lange
Geraldine Walsh

3rd edition,
completely revised



1 Examination Technique and Normal Findings

1

Radiographic Examination	2	Vascular System	20
Frontal Chest Radiograph	2	The Mediastinum	24
Lateral Chest Radiograph	3	Conventional Tomography	25
Oblique Views	3	Computed Tomography	28
Apical Lordotic View	4	Radionuclide Imaging	38
Fluoroscopy	4	Lung Scintigraphy	38
Scatter-Reduction Grids	4	Myocardial Perfusion Scintigraphy	39
The Normal Chest Radiograph	5	Positron Emission Tomography (PET) and PET-CT	41
Structures of the Chest Wall	5	Ultrasound	42
Diaphragm	9	Pulmonary Angiography	42
Pleura	9	Bronchography	45
Lung Parenchyma	16	Magnetic Resonance Imaging	47
Tracheobronchial System	18		

2 Malformations

50

Bronchopulmonary Sequestrations	50	Congenital Bronchial Atresia	60
Hypogenetic Lung Syndrome (Scimitar Syndrome)	53	Vascular Malformations	61
Bronchogenic Cysts	54	Pulmonary Arteriovenous Malformations (AVM)	61
Congenital Cystic Adenomatoid Malformation of the Lung (CCAM)	56	Partial Anomalous Pulmonary Venous Drainage (PAPVD)	61
Pulmonary Agenesis, Aplasia, and Hypoplasia	57	Hypoplasia and Atresia of the Pulmonary Artery	62
Congenital Lobar Emphysema	59		

3 Infection and Inflammatory Disorders

64

Pneumonia	64	Echinococcosis	89
Lung Abscess and Septic Pulmonary Emboli	69	Paragonimiasis	90
Pulmonary Tuberculosis	72	Ascariasis	90
Fungal Diseases of the Lung	80	Strongyloidiasis and Ankylostomiasis	91
Candidiasis	80	Sarcoidosis	91
Aspergillosis	81	Idiopathic Interstitial Pneumonias	95
Histoplasmosis	84	Acquired Immunodeficiency Syndrome	97
Coccidioidomycosis	84	Infections	97
Actinomycosis	85	Intrathoracic Malignancy	98
Nocardiosis	85	Lymphoproliferative Disorders	99
Cryptococcosis (Torulosis)	86	Autoimmune Disorders/Connective Tissue Diseases	100
Parasitic Infections	86	Systemic Lupus Erythematosus	100
Amebiasis	86	Rheumatoid Arthritis	100
Toxoplasmosis	87	Progressive Systemic Sclerosis (PSS)	101
Pneumocystis Jiroveci Pneumonia (Previously Known as Pneumocystis Carinii Pneumonia—PCP)	87	Sjögren Syndrome	102
Schistosomiasis	88	Dermatomyositis	102
		Ankylosing Spondylitis (AS)	102

Wegener Granulomatosis (WG)	103	Pulmonary Eosinophilia	
Allergic Angiitis and Granulomatosis		(Eosinophilic Lung Disease)	106
(Churg–Strauss Disease)	103	Radiation-Induced Lung Disease	107
Antiglomerular Basement Membrane Disease		Drug-Induced Lung Disease	108
(AGBMD)	105		
Idiopathic Pulmonary Hemosiderosis (IPH)	105		

4 Chronic Obstructive Pulmonary Disease and Diseases of the Airways 110

Emphysema	110	Cellular Bronchiolitis	122
Other Forms of Emphysema	114	Constrictive Bronchiolitis	123
Cicatricial Emphysema	114	Swyer–James–Macleod Syndrome	123
Bullous Emphysema	115	Organizing Pneumonia/Cryptogenic Organizing	
Compensatory Emphysema	115	Pneumonia (also known as Bronchiolitis)	
Chronic Bronchitis	116	Obliterans Organizing Pneumonia)	124
Bronchiectasis	117	Bronchial Asthma	125
Bronchiolitis-Small Airway Disease	122		

5 Inhalational Lung Diseases and Pneumoconioses 126

Foreign Body Aspiration	126	Other Inorganic Pneumoconioses	144
Pneumoconiosis	128	Extrinsic Allergic Alveolitis (EAA)/	
Pneumoconiosis Due to Inorganic Dusts	136	Hypersensitivity pneumonitis	145
Silicosis	136	Inhalation of Toxic Gases and Fumes	147
Coal-Worker’s Pneumoconiosis (CWP)	140		
Asbestos-Induced Pleural Changes and			
Asbestosis	140		

6 Tumors and Tumor-Like Lesions of the Lung 149

The Solitary Pulmonary Nodule (SPN)	149	Pulmonary Metastases	172
Benign Tumors of the Lung	150	Lymphoma	178
Pulmonary Hamartoma	151	Primary Pulmonary Lymphoma	181
Carcinoid, Mucoepidermoid, and Adenoid		AIDS-Related Lymphoma	181
Cystic Carcinoma	152	Lymphomatoid Granulomatosis	181
Langerhans Cell Histiocytosis (LCH)	154	Treated Lymphoma	181
Bronchial Carcinoma	157		

7 Pulmonary Hypertension and Edema 183

Pulmonary Hypertension	183	Cardiac Defects with a Left-to-Right Shunt	193
Precapillary Pulmonary Hypertension	184	Pulmonary Hypertension Due to Alveolar	
Primary Pulmonary Hypertension	184	Hypoventilation	194
Acute Pulmonary Embolism (PE) and Chronic		Postcapillary Pulmonary Hypertension	195
Thromboembolic Pulmonary		Pulmonary Veno-Occlusive Disease	195
Hypertension (CTEPH)	187	Pulmonary Congestion and Edema	195

Chest Wall Injuries	200	Pulmonary Atelectasis	207
Rib Fractures	200	Pneumonia in the Trauma Patient	207
Sternal Fractures	200	Tracheobronchial Rupture	207
Vertebral Fractures	201	Pulmonary Torsion	207
Subcutaneous Emphysema	202	Adult Respiratory Distress Syndrome (Shock Lung, Da Nang Syndrome, Stiff Lung Syndrome, Oxygen Lung, Transfusion Lung)	208
Pleural Injuries	203	Mediastinal Injuries	210
Pneumothorax	203	Pneumomediastinum	210
Hemothorax	205	Traumatic Aortic and Great Vessel Injury	211
Pulmonary Parenchymal Trauma	205	Traumatic Diaphragmatic Rupture	212
Pulmonary Contusion	205		
Pulmonary Hematomata and Pneumatoceles ..	206		

9 Diseases of the Pleura, Diaphragm, and Chest Wall

Diseases of the Pleura	214	Diseases of the Diaphragm	228
Pleural Effusion	214	Diaphragmatic Paralysis	229
Pneumothorax	220	Subphrenic Abscess	229
Pleural Thickening and Fibrothorax	222	Diaphragmatic Hernia	231
Fibrothorax and Asbestos-Induced Diffuse Pleural Thickening	224	Bochdalek Hernia	231
Pleural Mesothelioma	225	Morgagni Hernia	232
		Hiatus Hernia	232
		Tumors of the Diaphragm	234
		Diseases of the Chest Wall	234

10 Radiology of Cardiac Disease

Cardiac Size	240	Cardiac Failure	255
Cardiac Contour	240	Ischemic Heart Disease (IHD) and Myocardial Infarction (MI)	256
Congenital Heart Disease	243	Cardiomyopathies	261
Cardiac Anomalies without a Shunt	243	Acquired Valvular Heart Disease	262
Pulmonary Stenosis	243	Mitral Stenosis	262
Congenital Aortic Stenosis	244	Mitral Regurgitation	263
Coarctation of the Aorta	244	Aortic Stenosis	267
Congenital Cardiac Anomalies Associated with a Left-to-Right Shunt	247	Aortic Regurgitation	268
Atrial Septal Defect	248	Multivalvular Disease	268
Ventricular Septal Defect	250	Hypertensive Heart Disease	269
Patent Ductus Arteriosus	250	Cardiac Neoplasms	269
Total Anomalous Pulmonary Venous Drainage (TAPVD)	251	Imaging the Heart Post-Intervention and Surgery .	269
Congenital Cardiac Anomalies associated with a Right-to-Left Shunt	253	Cardiac Pacemakers	269
Tetralogy of Fallot	253	Coronary Artery Bypass Graft (CABG) Surgery .	270
Uncorrected Transposition of the Great Vessels	254	Coronary Stents	271
Ebstein Anomaly	254	Pericardial Disease	272
Acquired Heart Disease	255	Pericardial Effusion	272
		Prosthetic Heart Valves	272
		Constrictive Pericarditis	272
		Pericardial Cysts and Diverticula	273

11 Diseases of the Mediastinum

274

Mediastinal Displacement	274	Aortic Ectasia	278
Air in the Mediastinum	274	Aortitis	284
Air in the Esophagus and Stomach	274	Mediastinal Hematoma	284
Pneumomediastinum	274	Neoplastic Mediastinal Widening	285
Non-Neoplastic Mediastinal Widening	276	The Thymus	288
Acute Mediastinitis	276	Mediastinal Lymph Node Enlargement	290
Diseases of the Thoracic Aorta	276	Primary Mediastinal Tumors: Benign Teratoma and Malignant Germ Cell Tumors	290
Chronic Mediastinitis	276	Neurogenic Tumors	291
Aortic Anomalies	276		

12 High-Resolution/Thin-Section CT Patterns in Pulmonary Disease

293

Ground-Glass Opacification—Consolidation	293	Decreased Lung Attenuation and Cystic Lung Change	297
Multifocal Peribronchial Consolidation	294	Inhomogeneous-Mosaic Lung Attenuation	299
Pulmonary Nodules	295		
Intra- and Interlobular Septal Thickening and Reticular Pattern	296		

13 Radiographic Signs and Differential Diagnosis

301

1. The Opaque Hemithorax	301	7. Linear Shadowing	324
2. Lobar and Segmental Opacification	304	8. Reticular Shadowing	328
3. Opacification which does not Conform to Anatomic Boundaries	310	9. Cavitating Lung Lesions	332
Inhomogeneous and Regionally Confluent Air Space Opacification	310	10. Ring Shadows and Cystic Lung Disease	334
Bilateral Symmetric Hazy Opacification	312	11. Pulmonary Hypertransradiancy	337
4. Opacification involving the Upper Zone and/or Apicomedial Angle	315	12. Hilar Enlargement	341
5. Lower Lung and Cardiophrenic Angle Opacification	318	13. Intrathoracic Calcifications	344
6. Pulmonary Nodules	320	Pulmonary Calcifications	345
		Tracheobronchial Calcifications	347
		Lymph Node Calcification	348
		Pleural Calcifications	348

14 Thoracic Intervention

349

Biopsy	349	Coil Embolization of Pulmonary Arteriovenous Malformations	354
Drainage	350	Coil Embolization of Pulmonary Artery False Aneurysms	355
Foreign Body Retrieval-Extraction	351		
Bronchial Artery Embolization	352		

Reference List

357

Index

369