

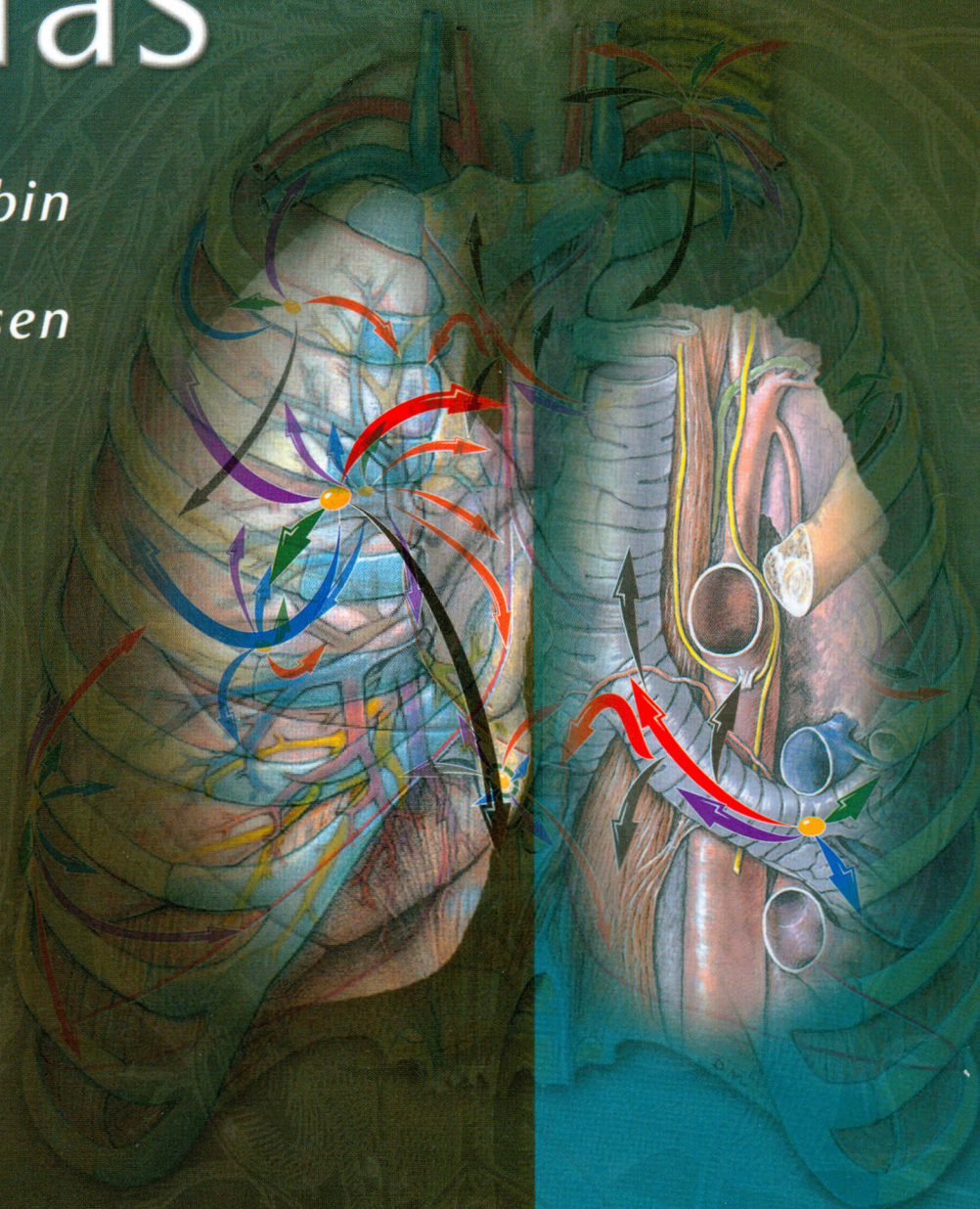
152198


TNM Staging Atlas

Includes the
fully searchable
online text and
image bank

Philip Rubin

John T. Hansen



 Wolters Kluwer Health | Lippincott Williams & Wilkins

SOLUTION

<i>Preface</i>	<i>ix</i>
<i>Acknowledgments</i>	<i>x</i>
<i>How to Use the Atlas</i>	<i>xi</i>

SECTION 1: HEAD AND NECK PRIMARY SITES

1. Introduction and Orientation	2
2. Paranasal Ethmoid Sinus	17
3. Maxillary Sinus Antrum	25
4. Nasopharynx	33
5. Oral Cavity	41
6. Parotid Gland	49
7. Oropharynx	55
8. Hypopharynx	63
9. Supraglottic Larynx	71
10. Glottic Larynx	79
11. Subglottic Larynx	85
12. Thyroid	91

SECTION 2: THORAX PRIMARY SITES

13. Introduction and Orientation	101
14. Pancoast Cancer	117
15. Bronchioloalveolar Cancer	125
16. Adenocarcinoma	133
17. Large Cell Anaplastic Cancer	141
18. Squamous Cell Cancer	149
19. Small Cell Anaplastic Cancer	155
20. Mesothelioma	163
21. Breast Cancer	169
22. Thoracic Esophagus	179

SECTION 3: ABDOMEN PRIMARY SITES

23. Introduction and Orientation	189
24. Esophagogastric Junction	204
25. Stomach	214
26. Liver	223
27. Gallbladder	231
28. Extrahepatic Bile Ducts	239
29. Pancreas	245
30. Ampulla of Vater	253
31. Colon	260
32. Small Intestine	270
33. Rectum	278
34. Anus	287

SECTION 4: MALE GENITAL TRACT AND URINARY SYSTEM PRIMARY SITES

35. Introduction and Orientation	295
36. Kidney: Renal Cancer	309
37. Renal Pelvis and Ureters	319
38. Urinary Bladder	327
39. Prostate	337
40. Penis	347
41. Testes	353
42. Urethra	361

SECTION 5: GYNECOLOGIC PRIMARY SITES

43. Introduction and Orientation	369
44. Ovary	381

45. Fallopian Tubes	389
46. Fundus Uteri	395
47. Gestational Trophoblastic Tumors of the Uterus	403
48. Uterine Cervix	409
49. Vagina	417
50. Vulva	423

SECTION 6: GENERALIZED ANATOMIC PRIMARY SITES

51. Introduction and Orientation	433
52. Skin Integumentary System	445
53. Skin Melanoma	453
54. Musculoskeletal Soft Tissue Sarcoma	461
55. Bone	475

56. Lymphoid Neoplasms: Hodgkin Lymphoma and Non-Hodgkin Lymphoma	486
--	-----

SECTION 7: OPHTHALMIC PRIMARY SITES

57. Introduction and Orientation	501
58. Eyelid, Adnexa, and Conjunctiva	510
59. Uvea	518
60. Retina	527
61. Lacrimal Gland and Orbit	536
Appendix A: Recommended Reading and References	545
Appendix B: Figure and Table Credits	547
Index	551