

151412

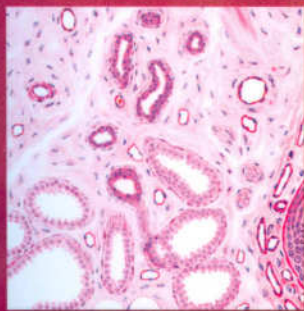
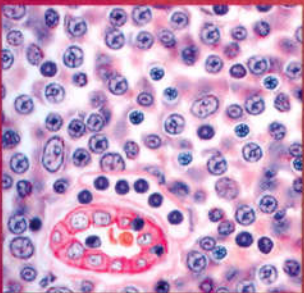
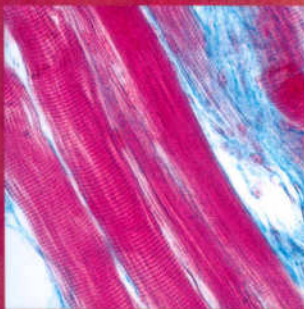
diFiore's

Atlas of Histology

with Functional Correlations

ELEVENTH EDITION

Victor P. Eroschenko



CONTENTS

Introduction	1
FIGURE 1.1 Planes of Section of a Round Object	2
FIGURE 1.2 Planes of Section of a Tube	2
FIGURE 1.3 Tubules of the Testis in Different Planes of Section	5

PART I ■ TISSUES 7

CHAPTER 1 The Cell and the Cytoplasm 9

FIGURE 1.1 Apical Surfaces of Ciliated and Nonciliated Epithelium	15
FIGURE 1.2 Junctional Complex Between Epithelial Cells	15
FIGURE 1.3 Basal Regions of Epithelial Cells	17
FIGURE 1.4 Basal Region of an Ion-Transporting Cell	17
FIGURE 1.5 Cilia and Microvilli	19
FIGURE 1.6 Nuclear Envelope and Nuclear Pores	19
FIGURE 1.7 Mitochondria	21
FIGURE 1.8 Rough Endoplasmic Reticulum	23
FIGURE 1.9 Smooth Endoplasmic Reticulum	23
FIGURE 1.10 Golgi Apparatus	25

CHAPTER 2 Epithelial Tissue 29

SECTION 1 Classification of Epithelial Tissue 29

FIGURE 2.1 Simple Squamous Epithelium: Surface View of Peritoneal Mesothelium	31
FIGURE 2.2 Simple Squamous Epithelium: Peritoneal Mesothelium Surrounding Small Intestine (Transverse Section)	31
FIGURE 2.3 Different Epithelial Types in the Kidney Cortex	33
FIGURE 2.4 Simple Columnar Epithelium: Surface of Stomach	33
FIGURE 2.5 Simple Columnar Epithelium on Villi in Small Intestine: Cells With Striated Borders (Microvilli) and Goblet Cells	35
FIGURE 2.6 Pseudostratified Columnar Ciliated Epithelium: Respiratory Passages—Trachea	37
FIGURE 2.7 Transitional Epithelium: Bladder (Contracted)	37
FIGURE 2.8 Transitional Epithelium: Bladder (Stretched)	39
FIGURE 2.9 Stratified Squamous Nonkeratinized Epithelium: Esophagus	39
FIGURE 2.10 Stratified Squamous Keratinized Epithelium: Palm of the Hand	41
FIGURE 2.11 Stratified Cuboidal Epithelium: Excretory Duct in Salivary Gland	41

SECTION 2 Glandular Tissue 43

FIGURE 2.12 Unbranched Simple Tubular Exocrine Glands: Intestinal Glands	45
FIGURE 2.13 Simple Branched Tubular Exocrine Glands: Gastric Glands	45
FIGURE 2.14 Coiled Tubular Exocrine Glands: Sweat Glands	47
FIGURE 2.15 Compound Acinar (Exocrine) Gland: Mammary Gland	47
FIGURE 2.16 Compound Tubuloacinar (Exocrine) Gland: Salivary Gland	49
FIGURE 2.17 Compound Tubuloacinar (Exocrine) Gland: Submaxillary Salivary Gland	49
FIGURE 2.18 Endocrine Gland: Pancreatic Islet	51
FIGURE 2.19 Endocrine and Exocrine Pancreas	51

CHAPTER 3 Connective Tissue 55

FIGURE 3.1 Loose Connective Tissue (Spread)	57
FIGURE 3.2 Cells of the Connective Tissue	59
FIGURE 3.3 Embryonic Connective Tissue	61
FIGURE 3.4 Loose Connective Tissue With Blood Vessels and Adipose Cells	61
FIGURE 3.5 Dense Irregular and Loose Irregular Connective Tissue	61

- FIGURE 3.6 Dense Irregular and Loose Irregular Connective Tissue 63
- FIGURE 3.7 Dense Irregular Connective Tissue and Adipose Tissue 63
- FIGURE 3.8 Dense Regular Connective Tissue: Tendon (Longitudinal Section) 65
- FIGURE 3.9 Dense Regular Connective Tissue: Tendon (Longitudinal Section) 65
- FIGURE 3.10 Dense Regular Connective Tissue: Tendon (Transverse Section) 67
- FIGURE 3.11 Adipose Tissue in the Intestine 67

CHAPTER 4 Cartilage and Bone 71

SECTION 1 Cartilage 71

- FIGURE 4.1 Developing Fetal Hyaline Cartilage 73
- FIGURE 4.2 Hyaline Cartilage and Surrounding Structures: Trachea 73
- FIGURE 4.3 Cells and Matrix of Mature Hyaline Cartilage 75
- FIGURE 4.4 Hyaline Cartilage: Developing Bone 75
- FIGURE 4.5 Elastic Cartilage: Epiglottis 77
- FIGURE 4.6 Elastic Cartilage: Epiglottis 77
- FIGURE 4.7 Fibrous Cartilage: Intervertebral Disk 77

SECTION 2 Bone 79

- FIGURE 4.8 Endochondral Ossification: Development of a Long Bone (Panoramic View, Longitudinal Section) 81
- FIGURE 4.9 Endochondral Ossification: Zone of Ossification 83
- FIGURE 4.10 Endochondral Ossification: Zone of Ossification 83
- FIGURE 4.11 Endochondral Ossification: Formation of Secondary (Epiphyseal) Centers of Ossification and Epiphyseal Plate in Long Bone (Decalcified Bone, Longitudinal Section) 85
- FIGURE 4.12 Bone Formation: Primitive Bone Marrow and Development of Osteons (Haversian Systems; Decalcified Bone, Transverse Section) 87
- FIGURE 4.13 Intramembranous Ossification: Developing Mandible (Decalcified Bone, Transverse Section) 89
- FIGURE 4.14 Intramembranous Ossification: Developing Skull Bone 89
- FIGURE 4.15 Cancellous Bone With Trabeculae and Bone Marrow Cavities: Sternum (Decalcified Bone, Transverse Section) 91
- FIGURE 4.16 Cancellous Bone: Sternum (Decalcified Bone, Transverse Section) 91
- FIGURE 4.17 Dry, Compact Bone: Ground, Transverse Section 93
- FIGURE 4.18 Dry, Compact Bone: Ground, Longitudinal Section 93
- FIGURE 4.19 Dry, Compact Bone: an Osteon, Transverse Section 95

CHAPTER 5 Blood 99

- FIGURE 5.1 Human Blood Smear: Erythrocytes, Neutrophils, Eosinophils, Lymphocyte, and Platelets 101
- FIGURE 5.2 Human Blood Smear: Red Blood Cells, Neutrophils, Large Lymphocyte, and Platelets 101
- FIGURE 5.3 Erythrocytes and Platelets in Blood Smear 103
- FIGURE 5.4 Neutrophils and Erythrocytes 103
- FIGURE 5.5 Eosinophil 105
- FIGURE 5.6 Lymphocytes 105
- FIGURE 5.7 Monocyte 105
- FIGURE 5.8 Basophil 107
- FIGURE 5.9 Human Blood Smear: Basophil, Neutrophil, Red Blood Cells, and Platelets 107
- FIGURE 5.10 Human Blood Smear: Monocyte, Red Blood Cells, and Platelets 109
- FIGURE 5.11 Development of Different Blood Cells in Red Bone Marrow (Decalcified) 109
- FIGURE 5.12 Bone Marrow Smear: Development of Different Cell Types 111
- FIGURE 5.13 Bone Marrow Smear: Selected Precursors of Different Blood Cells 113

CHAPTER 6 Muscle Tissue 117

- FIGURE 6.1 Longitudinal and Transverse Sections of Skeletal (Striated) Muscles of the Tongue 119
- FIGURE 6.2 Skeletal (Striated) Muscles of the Tongue (Longitudinal Section) 119

FIGURE 6.3	Skeletal Muscles, Nerves, Axons, and Motor End Plates	121
FIGURE 6.4	Skeletal Muscle With Muscle Spindle (Transverse Section)	123
FIGURE 6.5	Skeletal Muscle Fibers (Longitudinal Section)	123
FIGURE 6.6	Ultrastructure of Myofibrils in Skeletal Muscle	125
FIGURE 6.7	Ultrastructure of Sarcomeres, T tubules, and Triads in Skeletal Muscle	125
FIGURE 6.8	Longitudinal and Transverse Sections of Cardiac Muscle	127
FIGURE 6.9	Cardiac Muscle (Longitudinal Section)	127
FIGURE 6.10	Cardiac Muscle in Longitudinal Section	129
FIGURE 6.11	Longitudinal and Transverse Sections of Smooth Muscle in the Wall of the Small Intestine	131
FIGURE 6.12	Smooth Muscle: Wall of the Small Intestine (Transverse and Longitudinal Section)	131

CHAPTER 7 Nervous Tissue 135

SECTION 1 The Central Nervous System: Brain and Spinal Cord 135

FIGURE 7.1	Spinal Cord: Midthoracic Region (Transverse Section)	139
FIGURE 7.2	Spinal Cord: Anterior Gray Horn, Motor Neuron, and Adjacent White Matter	139
FIGURE 7.3	Spinal Cord: Midcervical Region (Transverse Section)	141
FIGURE 7.4	Spinal Cord: Anterior Gray Horn, Motor Neurons, and Adjacent Anterior White Matter	143
FIGURE 7.5	Motor Neurons: Anterior Horn of Spinal Cord	145
FIGURE 7.6	Neurofibrils and Motor Neurons in the Gray Matter of the Anterior Horn of the Spinal Cord	145
FIGURE 7.7	Anterior Gray Horn of the Spinal Cord: Multipolar Neurons, Axons, and Neuroglial Cells	147
FIGURE 7.8	Cerebral Cortex: Gray Matter	147
FIGURE 7.9	Layer V of the Cerebral Cortex	149
FIGURE 7.10	Cerebellum (Transverse Section)	149
FIGURE 7.11	Cerebellar Cortex: Molecular, Purkinje Cell, and Granular Cell Layers	151
FIGURE 7.12	Fibrous Astrocytes and Capillary in the Brain	151
FIGURE 7.13	Oligodendrocytes of the Brain	153
FIGURE 7.14	Microglia of the Brain	153

SECTION 2 The Peripheral Nervous System 157

FIGURE 7.15	Peripheral Nerves and Blood Vessels (Transverse Section)	159
FIGURE 7.16	Myelinated Nerve Fibers (Longitudinal and Transverse Sections)	161
FIGURE 7.17	Sciatic Nerve (Longitudinal Section)	163
FIGURE 7.18	Sciatic Nerve (Longitudinal Section)	163
FIGURE 7.19	Sciatic Nerve (Transverse Section)	163
FIGURE 7.20	Peripheral Nerve: Nodes of Ranvier and Axons	165
FIGURE 7.21	Dorsal Root Ganglion, With Dorsal and Ventral Roots, Spinal Nerve (Longitudinal Section)	165
FIGURE 7.22	Cells and Unipolar Neurons of a Dorsal Root Ganglion	167
FIGURE 7.23	Multipolar Neurons, Surrounding Cells, and Nerve Fibers of the Sympathetic Ganglion	167
FIGURE 7.24	Dorsal Root Ganglion: Unipolar Neurons and Surrounding Cells	167

PART II ■ **ORGANS** 169

CHAPTER 8 Circulatory System171

FIGURE 8.1	Blood and Lymphatic Vessels in the Connective Tissue	175
FIGURE 8.2	Muscular Artery and Vein (Transverse Section)	177
FIGURE 8.3	Artery and Vein in Dense Irregular Connective Tissue of Vas Deferens	177
FIGURE 8.4	Wall of a Large Elastic Artery: Aorta (Transverse Section)	179
FIGURE 8.5	Wall of a Large Vein: Portal Vein (Transverse Section)	179
FIGURE 8.6	Heart: a Section of the Left Atrium, Atrioventricular Valve, and Left Ventricle (Longitudinal Section)	181

- FIGURE 8.7 Heart: a Section of Right Ventricle, Pulmonary Trunk, and Pulmonary Valve (Longitudinal Section) 183
- FIGURE 8.8 Heart: Contracting Cardiac Muscle Fibers and Impulse-Conducting Purkinje Fibers 183
- FIGURE 8.9 A Section of Heart Wall: Purkinje Fibers 187

CHAPTER 9 Lymphoid System 191

- FIGURE 9.1 Lymph Node (Panoramic View) 195
- FIGURE 9.2 Lymph Node: Capsule, Cortex, and Medulla (Sectional View) 197
- FIGURE 9.3 Cortex and Medulla of a Lymph Node 199
- FIGURE 9.4 Lymph Node: Subcortical Sinus, Trabecular Sinus, Reticular Cells, and Lymphatic Nodule 199
- FIGURE 9.5 Lymph Node: High Endothelial Venule in the Paracortex (Deep Cortex) of a Lymph Node 201
- FIGURE 9.6 Lymph Node: Subcapsular Sinus, Trabecular Sinus, and Supporting Reticular Fibers 201
- FIGURE 9.7 Thymus Gland (Panoramic View) 203
- FIGURE 9.8 Thymus Gland (Sectional View) 203
- FIGURE 9.9 Cortex and Medulla of a Thymus Gland 205
- FIGURE 9.10 Spleen (Panoramic View) 207
- FIGURE 9.11 Spleen: Red and White Pulp 207
- FIGURE 9.12 Red and White Pulp of the Spleen 209
- FIGURE 9.13 Palatine Tonsil 209

CHAPTER 10 Integumentary System 213

- FIGURE 10.1 Thin Skin: Epidermis and the Contents of the Dermis 217
- FIGURE 10.2 Skin: Epidermis, Dermis, and Hypodermis in the Scalp 219
- FIGURE 10.3 Hairy Thin Skin of the Scalp: Hair Follicles and Surrounding Structures 221
- FIGURE 10.4 Hair Follicle: Bulb of the Hair Follicle, Sweat Gland, Sebaceous Gland, and Arrector Pili Muscle 223
- FIGURE 10.5 Thick Skin of the Palm, Superficial Cell Layers, and Melanin Pigment 225
- FIGURE 10.6 Thick Skin: Epidermis and Superficial Cell Layers 225
- FIGURE 10.7 Thick Skin: Epidermis, Dermis, and Hypodermis of the Palm 227
- FIGURE 10.8 Apocrine Sweat Gland: Secretory and Excretory Portions of the Sweat Gland 227
- FIGURE 10.9 Cross Section and Three-Dimensional Appearance of an Eccrine Sweat Gland 229
- FIGURE 10.10 Glomus in the Dermis of Thick Skin 231
- FIGURE 10.11 Pacinian Corpuscles in the Dermis of Thick Skin (Transverse and Longitudinal Sections) 231

CHAPTER 11 Digestive System: Oral Cavity and Salivary Glands 235

- FIGURE 11.1 Lip (Longitudinal Section) 237
- FIGURE 11.2 Anterior Region of the Tongue (Longitudinal Section) 239
- FIGURE 11.3 Posterior Tongue: Circumvallate Papilla, Surrounding Furrow, and Serous (von Ebner's) Glands (Cross Section) 239
- FIGURE 11.4 Filiform and Fungiform Papillae of the Tongue 241
- FIGURE 11.5 Posterior Tongue: Taste Buds in the Furrow of Circumvallate Papilla 241
- FIGURE 11.6 Posterior Tongue: Posterior to Circumvallate Papillae and Near Lingual Tonsil (Longitudinal Section) 243
- FIGURE 11.7 Lingual Tonsils (Transverse Section) 243
- FIGURE 11.8 Longitudinal Section of Dry Tooth 245
- FIGURE 11.9 Dried Tooth: Dentinoenamel Junction 247
- FIGURE 11.10 Dried Tooth: Cementum and Dentin Junction 247
- FIGURE 11.11 Developing Tooth (Longitudinal Section) 249
- FIGURE 11.12 Developing Tooth: Dentinoenamel Junction in Detail 249
- FIGURE 11.13 Parotid Salivary Gland 253
- FIGURE 11.14 Submandibular Salivary Gland 255
- FIGURE 11.15 Sublingual Salivary Gland 257
- FIGURE 11.16 Serous Salivary Gland: Parotid Gland 259
- FIGURE 11.17 Mixed Salivary Gland: Sublingual Gland 259

CHAPTER 12	Digestive System: Esophagus and Stomach	263
FIGURE 12.1	Wall of Upper Esophagus (Transverse Section)	265
FIGURE 12.2	Upper Esophagus (Transverse Section)	267
FIGURE 12.3	Lower Esophagus (Transverse Section)	267
FIGURE 12.4	Upper Esophagus: Mucosa and Submucosa (Longitudinal View)	269
FIGURE 12.5	Lower Esophagus Wall (Transverse Section)	271
FIGURE 12.6	Esophageal-Stomach Junction	273
FIGURE 12.7	Esophageal-Stomach Junction (Transverse Section)	273
FIGURE 12.8	Stomach: Fundus and Body Regions (Transverse Section)	275
FIGURE 12.9	Stomach: Mucosa of the Fundus and Body (Transverse Section)	277
FIGURE 12.10	Stomach: Fundus and Body Regions (Plastic Section)	279
FIGURE 12.11	Stomach: Superficial Region of Gastric (Fundic) Mucosa	281
FIGURE 12.12	Stomach: Basal Region of Gastric (Fundic) Mucosa	283
FIGURE 12.13	Pyloric Region of the Stomach	285
FIGURE 12.14	Pyloric-Duodenal Junction (Longitudinal Section)	287
CHAPTER 13	Digestive System: Small and Large Intestines	291
FIGURE 13.1	Duodenum of the Small Intestine (Longitudinal Section)	293
FIGURE 13.2	Small Intestine: Duodenum (Transverse Section)	295
FIGURE 13.3	Small Intestine: Jejunum (Transverse Section)	295
FIGURE 13.4	Intestinal Glands With Paneth Cells and Enteroendocrine Cells	297
FIGURE 13.5	Small Intestine: Jejunum With Paneth Cells	297
FIGURE 13.6	Small Intestine: Ileum With Lymphatic Nodules (Peyer's Patches) (Transverse Section)	299
FIGURE 13.7	Villi of Small Intestine (Longitudinal and Transverse Sections)	301
FIGURE 13.8	Large Intestine: Colon and Mesentery (Panoramic Views, Transverse Section)	303
FIGURE 13.9	Large Intestine: Colon Wall (Transverse Section)	303
FIGURE 13.10	Large Intestine: Colon Wall (Transverse Section)	305
FIGURE 13.11	Appendix (Panoramic View, Transverse Section)	307
FIGURE 13.12	Rectum (Panoramic View, Transverse Section)	309
FIGURE 13.13	Anorectal Junction (Longitudinal Section)	309
CHAPTER 14	Digestive System: Liver, Gallbladder, and Pancreas	313
FIGURE 14.1	Pig Liver Lobules (Panoramic View, Transverse Section)	315
FIGURE 14.2	Primate Liver Lobules (Panoramic View, Transverse Section)	317
FIGURE 14.3	Bovine Liver: Liver Lobule (Transverse Section)	319
FIGURE 14.4	Liver Lobule (Sectional View, Transverse Section)	319
FIGURE 14.5	Bile Canaliculi in Liver Lobule: Osmic Acid Preparation	319
FIGURE 14.6	Kupffer Cells in a Liver Lobule (India Ink Preparation)	321
FIGURE 14.7	Glycogen Granules in Liver Cells	321
FIGURE 14.8	Reticular Fibers in the Sinusoids of a Liver Lobule	321
FIGURE 14.9	Wall of Gallbladder	323
FIGURE 14.10	Exocrine and Endocrine Pancreas (Sectional View)	325
FIGURE 14.11	Pancreatic Islet	327
FIGURE 14.12	Pancreatic Islet (Special Preparation)	327
FIGURE 14.13	Pancreas: Endocrine (Pancreatic Islet) and Exocrine Regions	329
CHAPTER 15	Respiratory System	333
FIGURE 15.1	Olfactory Mucosa and Superior Concha in the Nasal Cavity (Panoramic View)	335
FIGURE 15.2	Olfactory Mucosa: Details of a Transitional Area	337
FIGURE 15.3	Olfactory Mucosa in the Nose: Transition Area	337
FIGURE 15.4	Epiglottis (Longitudinal Section)	339
FIGURE 15.5	Frontal Section of Larynx	341
FIGURE 15.6	Trachea (Transverse Section)	343
FIGURE 15.7	Tracheal Wall (Sectional View)	343
FIGURE 15.8	Lung (Panoramic View)	345

- FIGURE 15.9 Intrapulmonary Bronchus (Transverse Section) 347
- FIGURE 15.10 Terminal Bronchiole (Transverse Section) 347
- FIGURE 15.11 Respiratory Bronchiole, Alveolar Duct, and Lung Alveoli 349
- FIGURE 15.12 Alveolar Walls and Alveolar Cells 349
- FIGURE 15.13 Lung: Terminal Bronchiole, Respiratory Bronchiole, Alveolar Ducts, Alveoli, and Blood Vessel 351

CHAPTER 16 Urinary System 355

- FIGURE 16.1 Kidney: Cortex, Medulla, Pyramid, and Renal Papilla (Panoramic View) 359
- FIGURE 16.2 Kidney Cortex and Upper Medulla 363
- FIGURE 16.3 Kidney Cortex: Juxtaglomerular Apparatus 365
- FIGURE 16.4 Kidney Cortex: Renal Corpuscle, Juxtaglomerular Apparatus, and Convoluted Tubules 367
- FIGURE 16.5 Kidney: Scanning Electron Micrograph of Podocytes 369
- FIGURE 16.6 Kidney: Transmission Electron Micrograph of Podocyte and Adjacent Capillaries in the Renal Corpuscle 369
- FIGURE 16.7 Kidney Medulla: Papillary Region (Transverse Section) 371
- FIGURE 16.8 Kidney Medulla: Terminal End of Papilla (Longitudinal Section) 371
- FIGURE 16.9 Kidney: Ducts of Medullary Region (Longitudinal Section) 373
- FIGURE 16.10 Urinary System: Ureter (Transverse Section) 373
- FIGURE 16.11 Section of a Ureter Wall (Transverse Section) 375
- FIGURE 16.12 Ureter (Transverse Section) 375
- FIGURE 16.13 Urinary Bladder: Wall (Transverse Section) 377
- FIGURE 16.14 Urinary Bladder: Contracted Mucosa (Transverse Section) 377
- FIGURE 16.15 Urinary Bladder: Mucosa Stretched (Transverse Section) 379

CHAPTER 17 Endocrine System 383

SECTION 1 Endocrine System and Hormones 383

- FIGURE 17.1 Hypophysis: Adenohypophysis and Neurohypophysis (Panoramic View, Sagittal Section) 385
- FIGURE 17.2 Hypophysis: Sections of Pars Distalis, Pars Intermedia, and Pars Nervosa 387
- FIGURE 17.3 Pars Distalis of Adenohypophysis: Acidophils, Basophils, and Chromophobes 387
- FIGURE 17.4 Cell Types in the Hypophysis 389
- FIGURE 17.5 Hypophysis: Pars Distalis, Pars Intermedia, and Pars Nervosa (Human) 391

SECTION 2 Thyroid Gland, Parathyroid Glands, and Adrenal Gland 395

- FIGURE 17.6 Thyroid Gland: Canine (General View) 397
- FIGURE 17.7 Thyroid Gland Follicles, Follicular Cells, and Parafollicular Cells (Sectional View) 399
- FIGURE 17.8 Thyroid and Parathyroid Glands: Canine (Sectional View) 401
- FIGURE 17.9 Thyroid Gland and Parathyroid Gland 401
- FIGURE 17.10 Cortex and Medulla of Adrenal (Suprarenal) Gland 403
- FIGURE 17.11 Adrenal (Suprarenal) Gland: Cortex and Medulla 405

CHAPTER 18 Male Reproductive System 409

SECTION 1 The Reproductive System 409

- FIGURE 18.1 Peripheral Section of Testis 413
- FIGURE 18.2 Seminiferous Tubules, Straight Tubules, Rete Testis, and Efferent Ductules (Ductuli Efferentes) 415
- FIGURE 18.3 Primate Testis: Spermatogenesis in Seminiferous Tubules (Transverse Section) 417
- FIGURE 18.4 Primate Testis: Different Stages of Spermatogenesis 419
- FIGURE 18.5 Testis: Seminiferous Tubules (Transverse Section) 419
- FIGURE 18.6 Ductuli Efferentes and Tubules of Ductus Epididymis 421
- FIGURE 18.7 Tubules of the Ductus Epididymis (Transverse Section) 421
- FIGURE 18.8 Ductus (Vas) Deferens (Transverse Section) 423
- FIGURE 18.9 Ampulla of the Ductus (Vas) Deferens 423

SECTION 2 Accessory Reproductive Glands 427

- FIGURE 18.10 Prostate Gland and Prostatic Urethra 429
- FIGURE 18.11 Prostate Gland: Glandular Acini and Prostatic Concretions 431

- FIGURE 18.12 Prostate Gland: Prostatic Glands With Prostatic Concretions 431
- FIGURE 18.13 Seminal Vesicle 433
- FIGURE 18.14 Bulbourethral Gland 433
- FIGURE 18.15 Human Penis (Transverse Section) 435
- FIGURE 18.16 Penile Urethra (Transverse Section) 435

CHAPTER 19 Female Reproductive System 439

SECTION 1 Overview of the Female Reproductive System 439

- FIGURE 19.1 Ovary (Panoramic View) 443
- FIGURE 19.2 Ovary (European Mink) (Panoramic View) 445
- FIGURE 19.3 Ovary (European Mink) (Panoramic View) 447
- FIGURE 19.4 Ovary: Ovarian Cortex and Primordial and Primary Follicles 447
- FIGURE 19.5 Ovary: Primary Oocyte and Wall of Mature Follicle 449
- FIGURE 19.6 Ovary: Primordial and Primary Follicles 449
- FIGURE 19.7 Corpus Luteum (Panoramic View) 451
- FIGURE 19.8 Corpus Luteum: Theca Lutein Cells and Granulosa Lutein Cells 453
- FIGURE 19.9 Uterine Tube: Ampulla With Mesosalpinx Ligament (Panoramic View, Transverse Section) 455
- FIGURE 19.10 Uterine Tube: Mucosal Folds 455
- FIGURE 19.11 Uterine Tube: Lining Epithelium 457
- FIGURE 19.12 Uterine Wall: Proliferative (Follicular) Phase 459
- FIGURE 19.13 Uterine Wall: Secretory (Luteal) Phase 461
- FIGURE 19.14 Uterine Wall (Endometrium): Secretory (Luteal) Phase 463
- FIGURE 19.15 Uterine Wall: Menstrual Phase 465

SECTION 2 Cervix, Vagina, Placenta, and Mammary Glands 469

- FIGURE 19.16 Cervix, Cervical Canal, and Vaginal Fornix (Longitudinal Section) 471
- FIGURE 19.17 Vagina (Longitudinal Section) 473
- FIGURE 19.18 Glycogen in Human Vaginal Epithelium 473
- FIGURE 19.19 Vaginal Smears Collected During Different Reproductive Phases 475
- FIGURE 19.20 Vaginal Surface Epithelium 477
- FIGURE 19.21 Human Placenta (Panoramic View) 479
- FIGURE 19.22 Chorionic Villi: Placenta During Early Pregnancy 481
- FIGURE 19.23 Chorionic Villi: Placenta at Term 481
- FIGURE 19.24 Inactive Mammary Gland 483
- FIGURE 19.25 Mammary Gland During Proliferation and Early Pregnancy 483
- FIGURE 19.26 Mammary Gland During Late Pregnancy 485
- FIGURE 19.27 Mammary Gland During Lactation 485
- FIGURE 19.28 Lactating Mammary Gland 487

CHAPTER 20 Organs of Special Senses 491

- FIGURE 20.1 Eyelid (Sagittal Section) 495
- FIGURE 20.2 Lacrimal Gland 497
- FIGURE 20.3 Cornea (Transverse Section) 497
- FIGURE 20.4 Whole Eye (Sagittal Section) 499
- FIGURE 20.5 Posterior Eyeball: Sclera, Choroid, Optic Papilla, Optic Nerve, Retina, and Fovea (Panoramic View) 499
- FIGURE 20.6 Layers of the Choroid and Retina (Detail) 501
- FIGURE 20.7 Eye: Layers of Retina and Choroid 501
- FIGURE 20.8 Inner Ear: Cochlea (Vertical Section) 503
- FIGURE 20.9 Inner Ear: Cochlear Duct (Scala Media) 503
- FIGURE 20.10 Inner Ear: Cochlear Duct and the Organ of Corti 505