

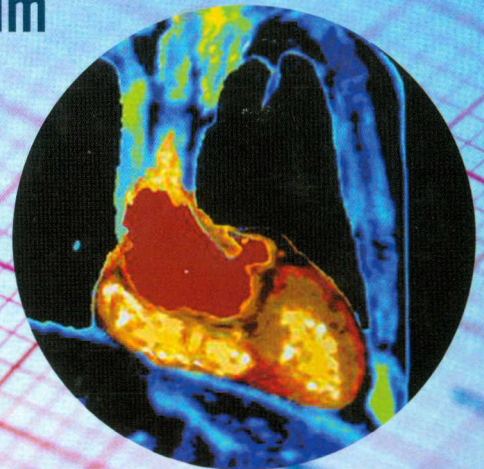
151714



HEART FAILURE

A PRACTICAL APPROACH TO TREATMENT

William T. Abraham | Henry Krum



Contents

<i>Contributors</i>	ix
<i>Preface</i>	xiii
1. <i>What Is Heart Failure?</i>	1
John J.V. McMurray, MD	
2. <i>The Epidemic of Heart Failure</i>	9
Mikhail Kosiborod, MD and Harlan M. Krumholz, MD, SM	
3. <i>What Causes Heart Failure?</i>	21
Alexander Lyon, BM, BCh, MRCP and Philip A. Poole-Wilson, MD, FRCP, FMedSci	
4. <i>Pathophysiology of Heart Failure</i>	43
Gary S. Francis, MD and W.H. Wilson Tang, MD	
5. <i>How to Judge Disease Severity, Clinical Status, and Prognosis</i>	53
Faiez Zannad, MD, PhD, FESC	
6. <i>Therapeutic Approach to Heart Failure: An Overview</i>	67
Daniel L. Dries, MD, MPH and Mariell Jessup, MD	
7. <i>How to Evaluate Patients with Symptoms Suggestive of Heart Failure</i>	79
Sharon Hunt, MD	
8. <i>Nonpharmacologic Treatment of Heart Failure</i>	83
Andrew J.S. Coats, MA, DM, DSc, FRACP, FRCP, FESC, FACC, FAHA, MBA	
9. <i>How to Use Diuretics in Heart Failure Patients</i>	91
Robert W. Schrier, MD	
10. <i>How to Use Neurohormonal Antagonists in Heart Failure</i>	105
Alexander E. Fraley, MD and Barry H. Greenberg, MD	
11. <i>Is There Still a Role for Digitalis in Heart Failure?</i>	127
Joseph S. Rossi, MD and Mihai Gheorghiade, MD	

12. <i>The Heart Failure Hospitalization</i>	147
Lynne Warner Stevenson, MD, FACC	
13. <i>Ancillary Pharmacologic Therapies for Heart Failure</i>	171
Henry Krum, MBBS, PhD, FRACP, FCSANZ	
14. <i>Devices for the Treatment of Heart Failure</i>	181
William T. Abraham, MD, FACP, FACC, FAHA	
15. <i>Surgical Approaches to Heart Failure</i>	197
Robert E. Michler, MD, Michael Zembala, MD, and Daniel J. Goldstein, MD	
16. <i>When to Refer Patients for Heart Transplantation</i>	213
Maryjane Farr, MD and Donna Mancini, MD	
17. <i>Comorbidities and Heart Failure</i>	225
Henry Krum, MBBS, PhD, FRACP and Richard E. Gilbert, MBBS, PhD, FRACP	
18. <i>Disease Management Overview</i>	241
Robin J. Trupp, MSN, APRN, BC, CCRN, CCRC	
19. <i>How to Develop a Heart Failure Management Pathway</i>	253
Jennifer Farroni, RN, MSN, CNP, David Feldman, MD, PhD, and Sara Paul, RN, MSN, FNP	
20. <i>Integrating Inpatient and Outpatient Heart Failure Management</i>	267
Maryjane B. Giacalone, RN, NP and Marc J. Semigran MD	
21. <i>What Is a Heart Failure Clinic?</i>	277
Gregg C. Fonarow, MD, FACC	
22. <i>Putting It All Together: Optimizing the Management of Chronic Heart Failure Patients</i> . . .	297
Willem J. Remme, MD, PhD	
<i>Index</i>	315