

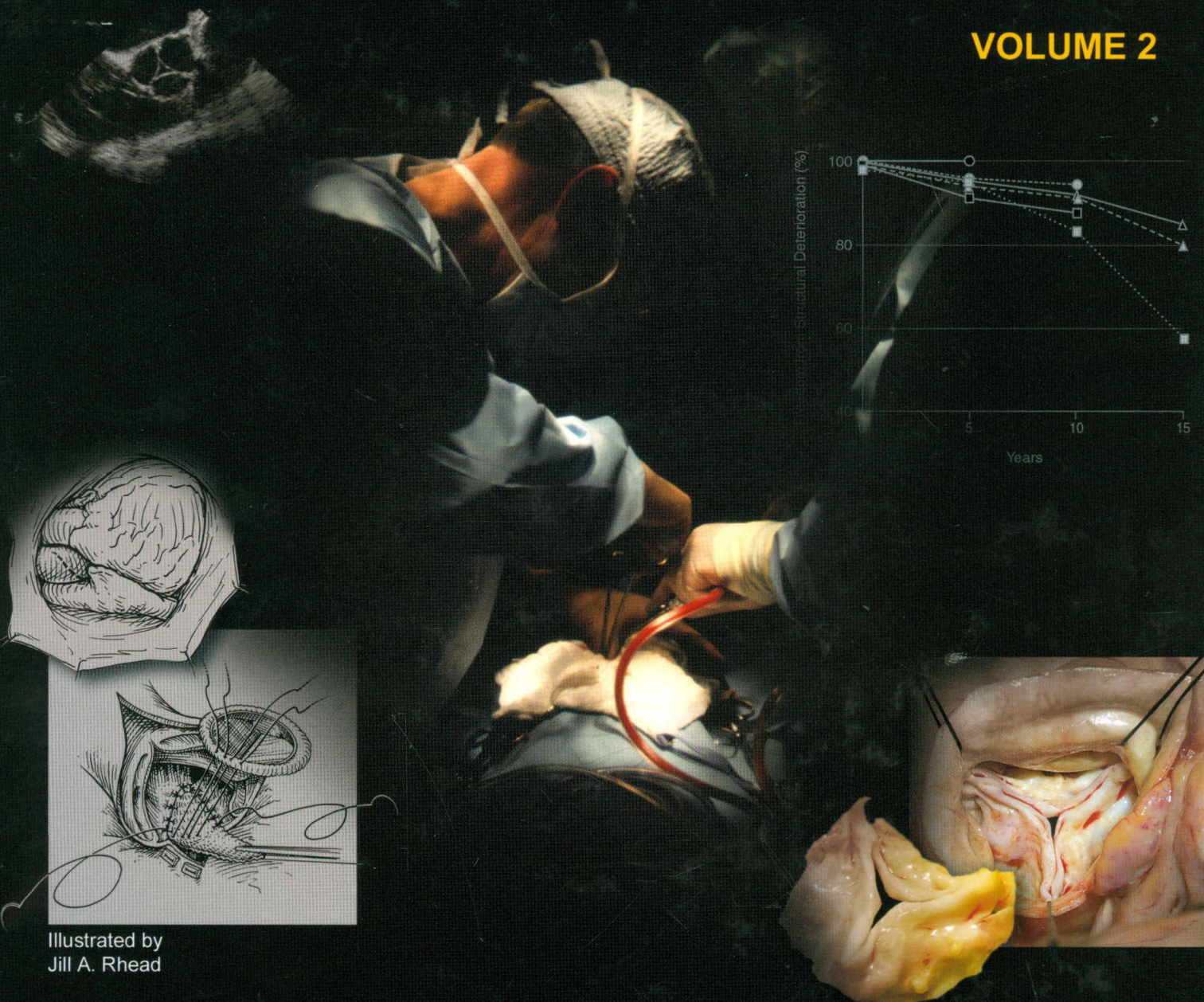
151430

Kirklin/Barratt-Boyes

CARDIAC SURGERY

THIRD EDITION

VOLUME 2



Illustrated by
Jill A. Rhead

Nicholas T. Kouchoukos
Eugene H. Blackstone • Donald B. Doty
Frank L. Hanley • Robert B. Karp



CHURCHILL
LIVINGSTONE

Contents

VOLUME 1

I GENERAL CONSIDERATIONS

- 1 Anatomy, Dimensions, and Terminology, 3
- 2 Hypothermia, Circulatory Arrest, and Cardiopulmonary Bypass, 66
- 3 Myocardial Management during Cardiac Surgery with Cardiopulmonary Bypass, 131
- 4 Anesthesia for Cardiovascular Surgery, 163
- 5 Postoperative Care, 195
- 6 Generating Knowledge from Information, Data, and Analyses, 254

II ISCHEMIC HEART DISEASE

- 7 Stenotic Atherosclerotic Coronary Artery Disease, 353
- 8 Left Ventricular Aneurysm, 437
- 9 Postinfarction Ventricular Septal Defect, 456
- 10 Mitral Regurgitation from Ischemic Heart Disease, 472

III ACQUIRED VALVAR HEART DISEASE

- 11 Mitral Valve Disease with or without Tricuspid Valve Disease, 483
- 12 Aortic Valve Disease, 554
- 13 Combined Aortic and Mitral Valve Disease with or without Tricuspid Valve Disease, 657
- 14 Tricuspid Valve Disease, 671
- 15 Infective Endocarditis, 689

IV CONGENITAL HEART DISEASE

- 16 Atrial Septal Defect and Partial Anomalous Pulmonary Venous Connection, 715
- 17 Total Anomalous Pulmonary Venous Connection, 753

- 18 Cor Triatriatum, 781
- 19 Unroofed Coronary Sinus Syndrome, 790
- 20 Atrioventricular Septal Defect, 800
- 21 Ventricular Septal Defect, 850
- 22 Congenital Sinus of Valsalva Aneurysm and Aortico–Left Ventricular Tunnel, 911
- 23 Patent Ductus Arteriosus, 928
- 24 Ventricular Septal Defect with Pulmonary Stenosis or Atresia, 946

VOLUME 2

- 25 Pulmonary Stenosis and Intact Ventricular Septum, 1075
- 26 Pulmonary Atresia and Intact Ventricular Septum, 1095
- 27 Tricuspid Atresia and Management of Single-Ventricle Physiology, 1113
- 28 Ebstein Anomaly, 1177
- 29 Truncus Arteriosus, 1200
- 30 Aortopulmonary Window, 1223
- 31 Origin of Right or Left Pulmonary Artery from Ascending Aorta, 1231
- 32 Congenital Anomalies of the Coronary Arteries, 1240
- 33 Congenital Aortic Stenosis, 1265
- 34 Coarctation of the Aorta and Interrupted Aortic Arch, 1315
- 35 Aortic Atresia and Other Forms of Hypoplastic Left Heart Physiology, 1377
- 36 Congenital Mitral Valve Disease, 1401
- 37 Vascular Ring and Sling, 1415
- 38 Complete Transposition of the Great Arteries, 1438
- 39 Double Outlet Right Ventricle, 1509

- 40 Double Outlet Left Ventricle, 1541
- 41 Congenitally Corrected Transposition of the Great Arteries and Other Forms of Atrioventricular Discordant Connection, 1549
- 42 Double Inlet Ventricle and Atretic Atrioventricular Valve, 1585
- 43 Anatomically Corrected Malposition of the Great Arteries, 1609
- 44 Atrial Isomerism, 1613

V OTHER CARDIAC CONDITIONS

- 45 Cardiac Rhythm Disturbance, 1629
- 46 Cardiac Trauma, 1671
- 47 Cardiac Tumor, 1679

- 48 Hypertrophic Obstructive Cardiomyopathy, 1701
- 49 Heart Failure, 1724
- 50 Pericardial Disease, 1779

VI DISEASES OF THE THORACIC ARTERIES AND VEINS

- 51 Acute Traumatic Aortic Transection, 1799
- 52 Acute Aortic Dissection, 1820
- 53 Chronic Thoracic and Thoracoabdominal Aortic Disease, 1851
- 54 Diseases of the Pulmonary Arteries, 1901
- 55 Acquired Diseases of the Systemic Veins, 1919