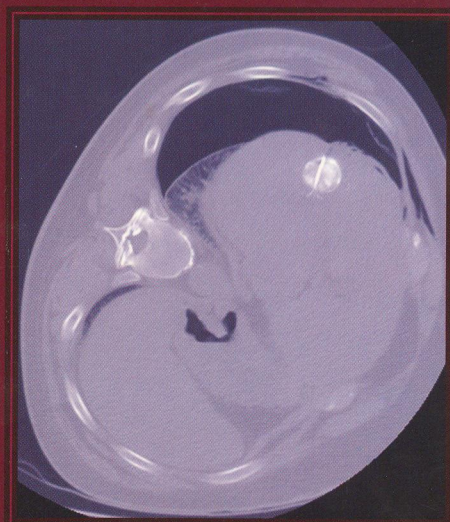
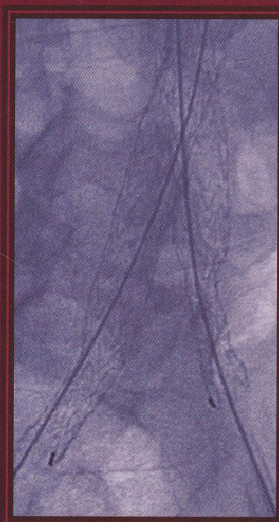


152270

2nd Edition

Karim Valji

Vascular and Interventional Radiology



SAUNDERS



ELSEVIER

Contents

SECTION I

GENERAL PRINCIPLES

- | | | | | | |
|---|--|----|----|---|-----|
| 1 | Patient Evaluation and Care | 3 | 14 | Inferior Vena Cava | 394 |
| 2 | Standard Angiographic and
Interventional Techniques | 15 | 15 | Upper Extremity Veins and Superior
Vena Cava | 420 |
| 3 | Pathogenesis of Vascular Diseases | 49 | 16 | Vascular Access Placement and Foreign
Body Retrieval | 443 |
| | | | 17 | Hemodialysis Access | 463 |
| | | | | <i>Anne C. Roberts, MD</i> | |
| | | | 18 | Lymphatic System | 483 |

SECTION II

VASCULAR DIAGNOSIS AND INTERVENTION

- | | | |
|----|--|-----|
| 4 | Thoracic Aorta | 77 |
| 5 | Abdominal Aorta | 102 |
| 6 | Pelvic and Lower Extremity Arteries | 127 |
| 7 | Upper Extremity Arteries | 182 |
| 8 | Renal Arteries and Veins | 204 |
| 9 | Mesenteric Arteries | 240 |
| 10 | Hepatic, Splenic, and Portal Vascular
Systems | 269 |
| 11 | Endocrine, Exocrine, and Reproductive
Systems | 320 |
| 12 | Pulmonary and Bronchial Arteries | 347 |
| 13 | Lower Extremity Veins | 374 |

SECTION III

NONVASCULAR DIAGNOSIS AND INTERVENTION

- | | | |
|----|--|-----|
| 19 | Percutaneous Biopsy | 495 |
| | <i>Thomas B. Kinney, MD</i> | |
| 20 | Transcatheter Fluid Drainage | 516 |
| | <i>Horacio B. D'Agostino, MD, Denisse Hurvitz, MD,
Linda Nall, MD, Eduardo Gonzalez Toledo, MD, PhD,
and Guillermo P. Sangster, MD</i> | |
| 21 | Gastrointestinal Interventions | 532 |
| | <i>Gerant Rivera-Sanfeliz, MD, and
Gregory M. Lim, MD</i> | |
| 22 | Biliary System | 544 |
| | <i>Steven C. Rose, MD</i> | |
| 23 | Urologic and Genital Systems | 568 |
| | <i>Steven B. Oglevie, MD</i> | |
| | Index | 597 |